

Stefan Thiel

2013

Paper cuts from the series

Schwarzwasser

SEMJON CONTEMPORARY
GALERIE FÜR ZEITGENÖSSISCHE KUNST



Schröderstr. 1, 10115 Berlin, Tel.+49-30-784 12 91, Fax.+49-30-28 09 41 99,
office@semjoncontemporary.com, www.semjoncontemporary.com



Stefan Thiel

View into the 2013 gallery exhibition *Schwarzwasser* with
Stechlinsee 3-2013

Photo: Jürgen Baumann

Collection of Nationalgalerie (gift by a private collector)

SEMJON CONTEMPORARY
GALERIE FÜR ZEITGENÖSSISCHE KUNST





Stefan Thiel

View into the 2013 gallery exhibition *Schwarzwasser* with
Stechlinsee 3-2013

Photo: Jürgen Baumann

Collection of Nationalgalerie (gift by a private collector)

SEMJON CONTEMPORARY
GALERIE FÜR ZEITGENÖSSISCHE KUNST





Stefan Thiel

Exhibition view of *Schwarzwasser* with *Stechlinsee-Studie 2* (left side), followed by *Stechlinsee-Studie 1*, *Stechlinsee-Studie 3* and *Stechlinsee 2/13*

Photo: Jürgen Baumann



Stefan Thiel

Stechlinsee 3-2013

2013, 158 x 239 cm, (framed), construction paper on
300 g/qm museum board

Photo: Stefan Thiel

Collection of Nationalgalerie (gift by a private collector)

SEMJON CONTEMPORARY
GALERIE FÜR ZEITGENÖSSISCHE KUNST





Stefan Thiel

Stechlinsee 3-2013 (detail)

2013, 158 x 239 cm, (framed), construction paper on
300 g/qm museum board

Photo: Stefan Thiel

Collection of Nationalgalerie (gift by a private collector)

SEMJON CONTEMPORARY
GALERIE FÜR ZEITGENÖSSISCHE KUNST





Stefan Thiel
Stechlinsee 2-2013
2013, 73 x 131 cm, 75,2 x 132,1 cm (framed), construction paper on
300 g/qm museum board
Photo: Stefan Thiel



Stefan Thiel

Stechlinsee-Studie 1

2013, 40 x 80 cm, 42,2, x 82,2 cm (framed), construction paper on
300 g/qm museum board

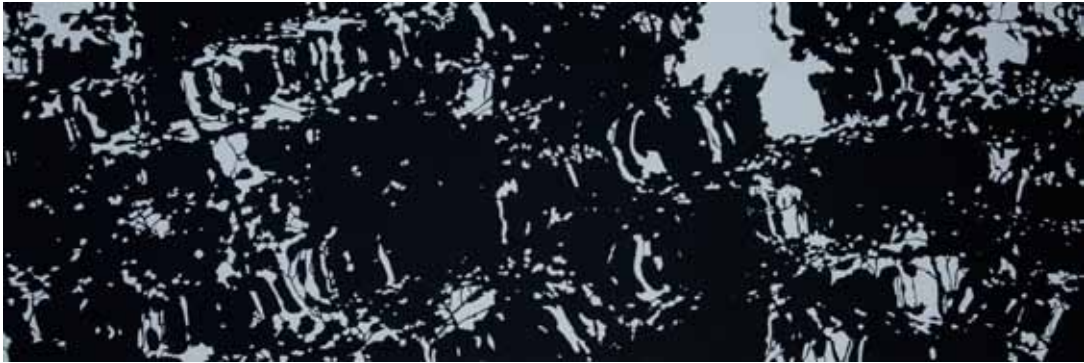
Photo: Stefan Thiel

SEMJON CONTEMPORARY
GALERIE FÜR ZEITGENÖSSISCHE KUNST





Stefan Thiel
Stechlinsee-Studie 2
2013, 40 x 80 cm, 42,2, x 82,2 cm (framed), construction paper
on 300 g/qm museum board
Photo: Stefan Thiel



Stefan Thiel

Stechlinsee-Studie 3

2013, 40 x 12 cm, 40,2 x 120,2 cm(framed), construction paper
on 300 g/qm museum board

Photo: Stefan Thiel

SEMJON CONTEMPORARY
GALERIE FÜR ZEITGENÖSSISCHE KUNST





Stefan Thiel

Piccolo Paessaggio 3

2015, 36,9 x 57,6 cm, 52,7 x 72,3 cm (framed), construction paper
on 300 g/qm museum board

Photo: Stefan Thiel

SEMJON CONTEMPORARY
GALERIE FÜR ZEITGENÖSSISCHE KUNST





Stefan Thiel
Piccolo Paessaggio 4
2015, 39 x 47,9 cm (paper size), construction paper
on 300 g/qm museum board
Photo: Stefan Thiel



Stefan Thiel
Handtasche 3-2012
2013, 100 x 90 cm, 130 g/qm construction paper on 300 g/qm museum
board; photo: Stefan Thiel
Private collection



Stefan Thiel
Handtasche 3-2012 (Detail)
2013, 100 x 90 cm, 130 g/qm construction paper on 300 g/qm museum
board
Photo: Maria Stepkina



Stefan Thiel
Handtasche 2-2012
2013, 100 x 90 cm, 130 g/qm construction paper on 300 g/qm museum
board
Photo: Stefan Thiel



Stefan Thiel

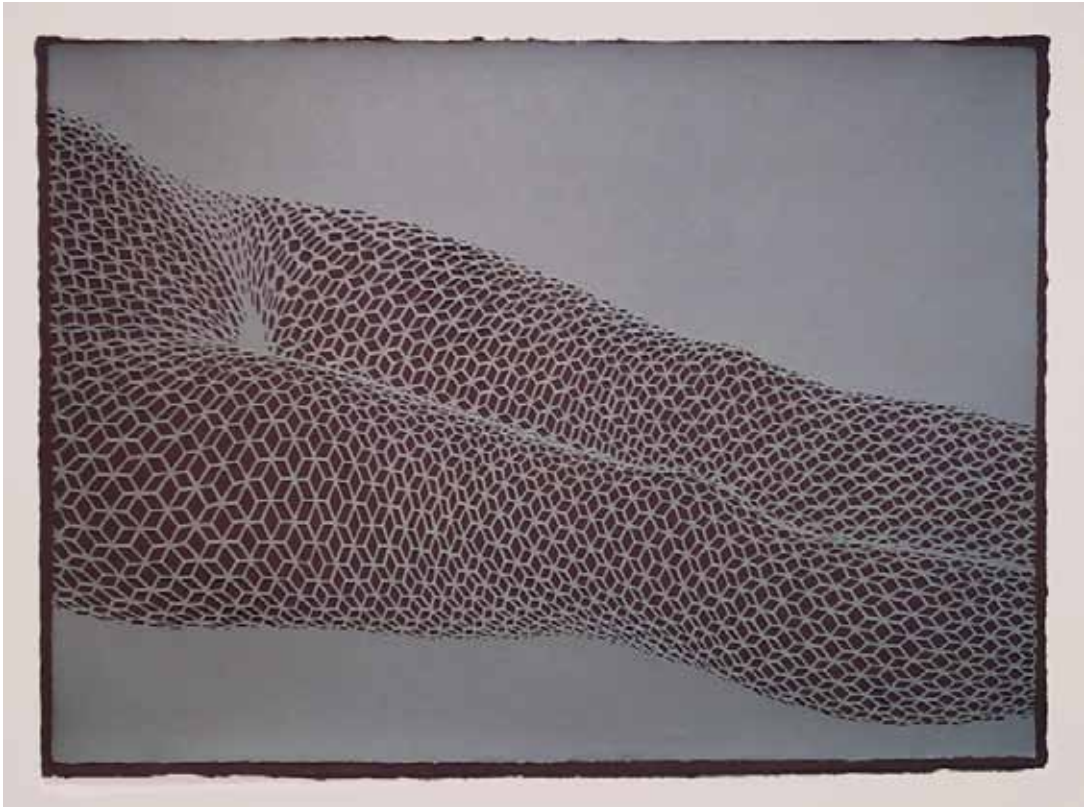
Handtasche 1-2013

2013, 90 x 114,5 cm, 130 g/qm construction paper on 300 g/qm museum board

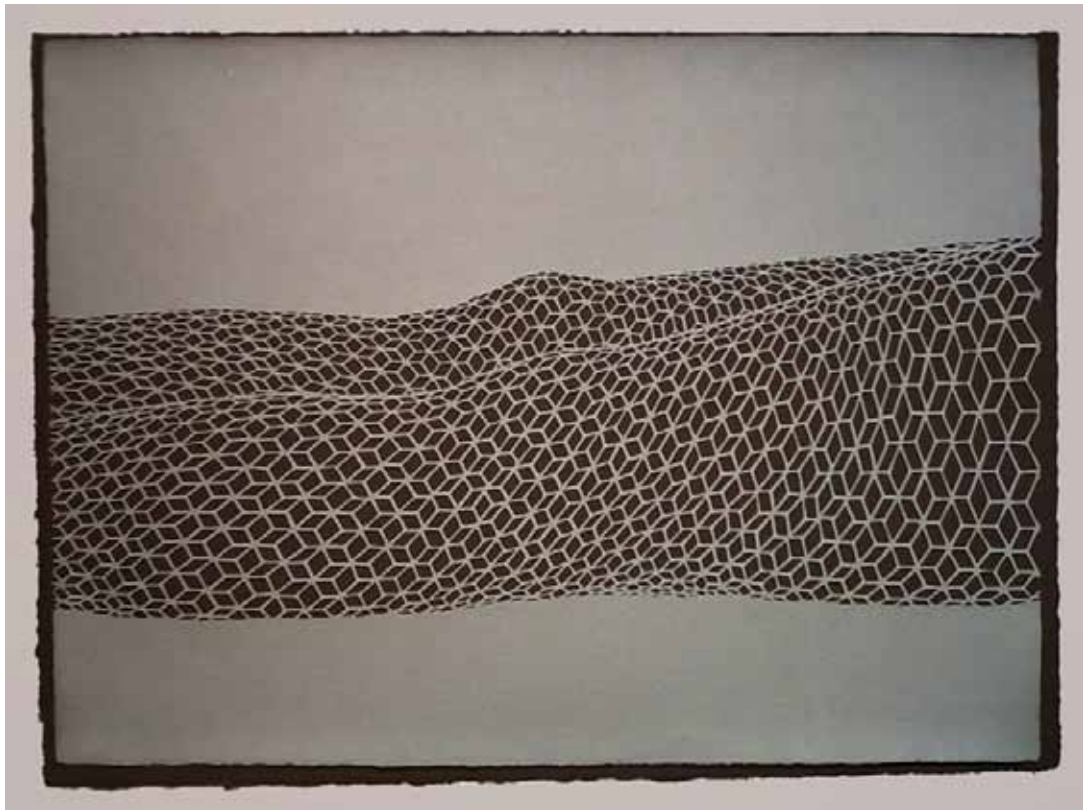
Photo: Stefan Thiel

SEMJON CONTEMPORARY
GALERIE FÜR ZEITGENÖSSISCHE KUNST





Stefan Thiel
Roma 2 - Blatt 6
2006, 49 x 67 cm (paper size), 56 x 73 x 3,7 cm (framed)
130 g/qm Bugra handmade paper on 300 g/qm museum board
Photo: Stefan Thiel



Stefan Thiel

Roma 2 - Blatt 7

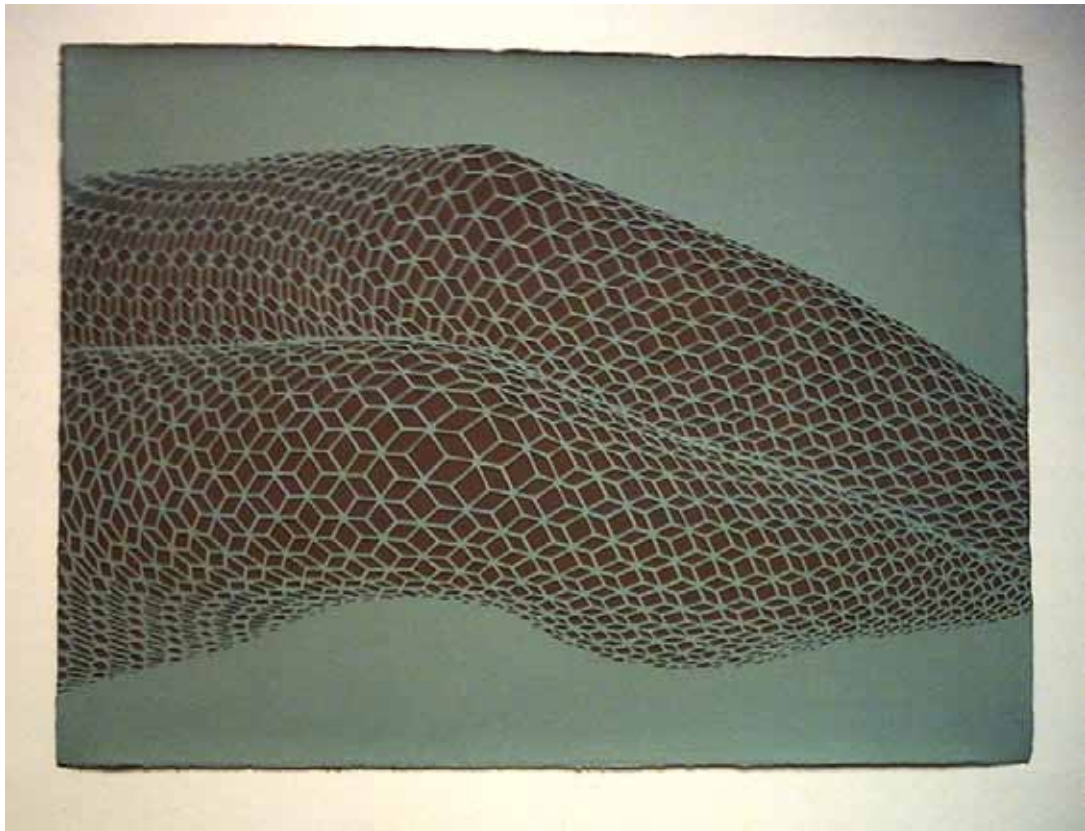
2006, 49 x 67 cm (paper size), (56 x 73 x 3,7 cm framed)

130 g/qm Bugra handmade paper on 300 g/qm museum board

Photo: Stefan Thiel

SEMJON CONTEMPORARY
GALERIE FÜR ZEITGENÖSSISCHE KUNST





Stefan Thiel

Roma 2 - Blatt 8

2006, 49 x 67 cm (paper size), (56 x 73 x 3,7 cm framed)

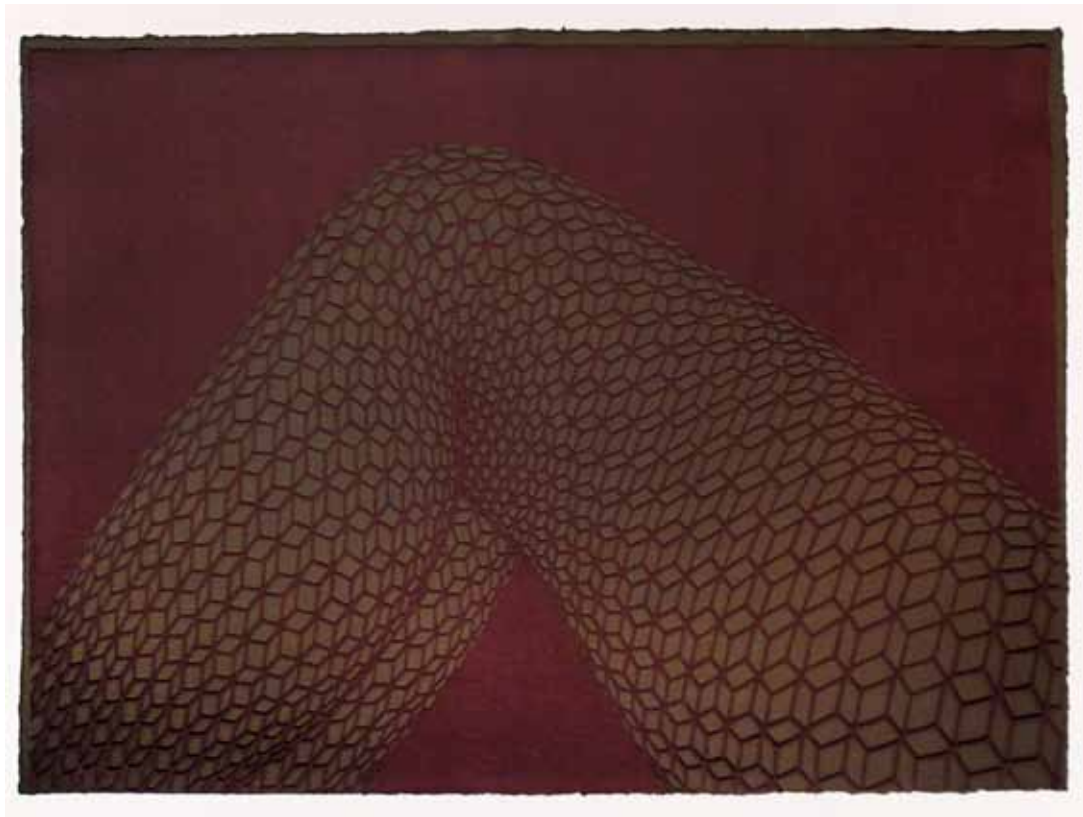
130 g/qm Bugra handmade paper on 300 g/qm museum board

Photo: Stefan Thiel

Private collection

SEMJON CONTEMPORARY
GALERIE FÜR ZEITGENÖSSISCHE KUNST





Stefan Thiel

Roma 2 - Blatt 10

2006, 49 x 67 cm (paper size), (56 x 73 x 3,7 cm framed)

130 g/qm Bugra handmade paper on 300 g/qm museum board

Photo: Stefan Thiel

SEMJON CONTEMPORARY
GALERIE FÜR ZEITGENÖSSISCHE KUNST

